

Geometra
Gabriele Giustarini

Loc. San Martino - via della Repubblica n. 13
53035 Monteriggioni Siena

P.IVA 00781960521 c.f. GST GRL 67H27 1726Q
tel 0577 589678
cell 348 2609091
e-mail: gabrielegiustarini@virgilio.it

Software: ProgeCAD 2016 Versione 7.2 [16.0.10.14]

Comuni di: CASTELLINA IN CHIANTI e MONTERIGGIONI

Proprietà: Sig.ra GIULIA GROPALLO

Progetto: PAPMAA per interventi da effettuarsi nell'azienda agricola

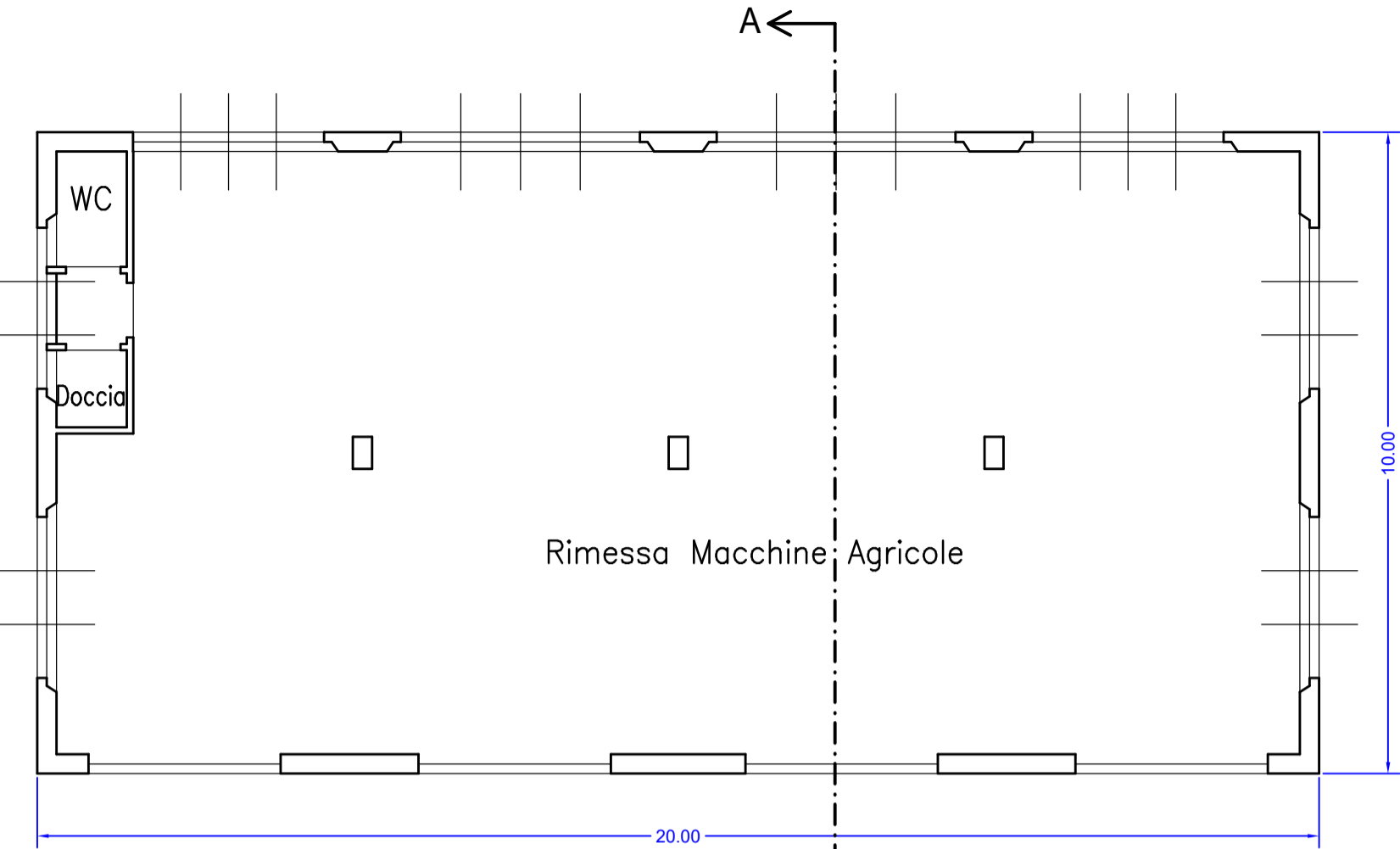
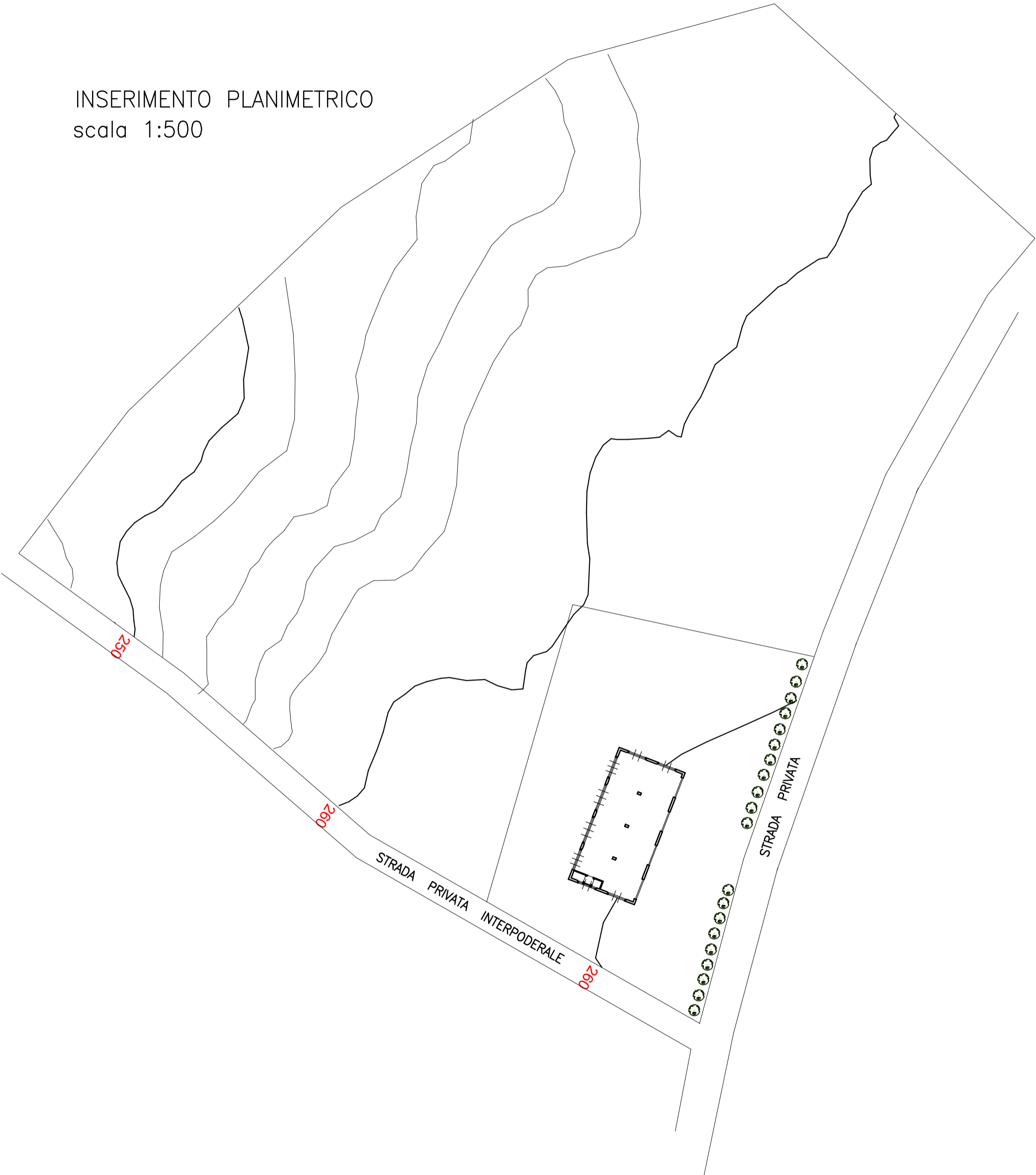
Sommario: Progetto di massima rimessa macchine
Seconda Soluzione art. 13.14 PTCP

scala grafica: 1:100

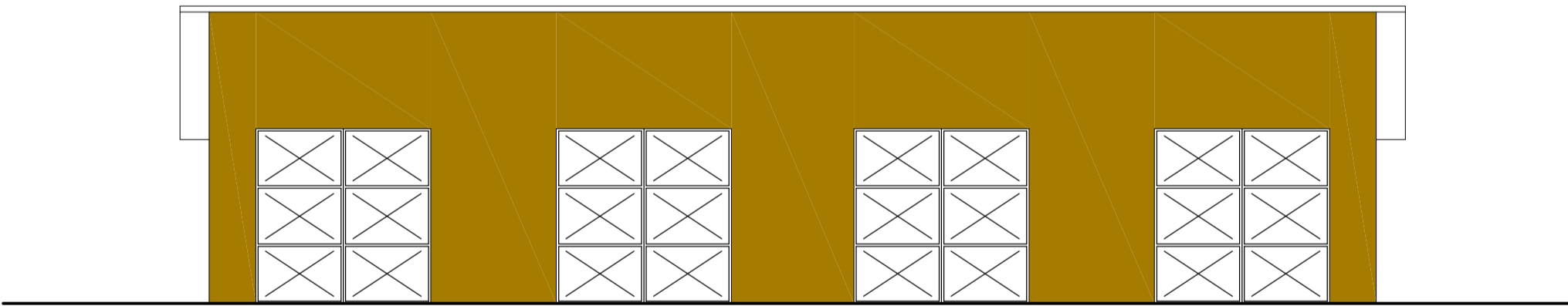
Note:

Monteriggioni, Gennaio 2022

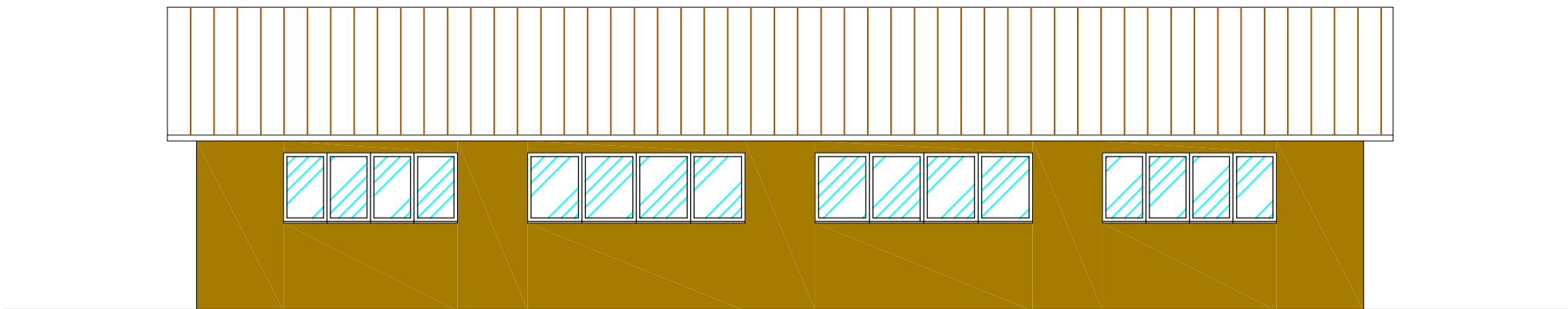
INSERIMENTO PLANIMETRICO
scala 1:500



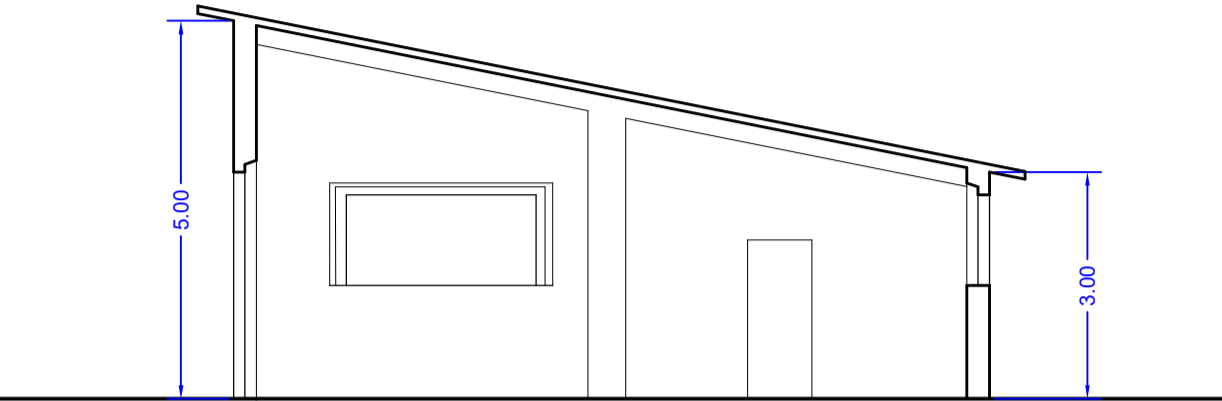
PIANTA



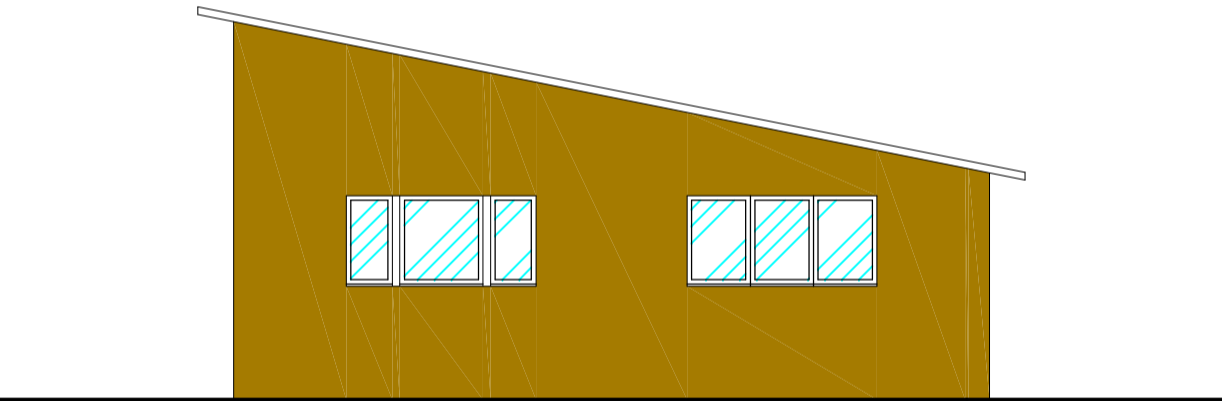
FRONTE STRADA



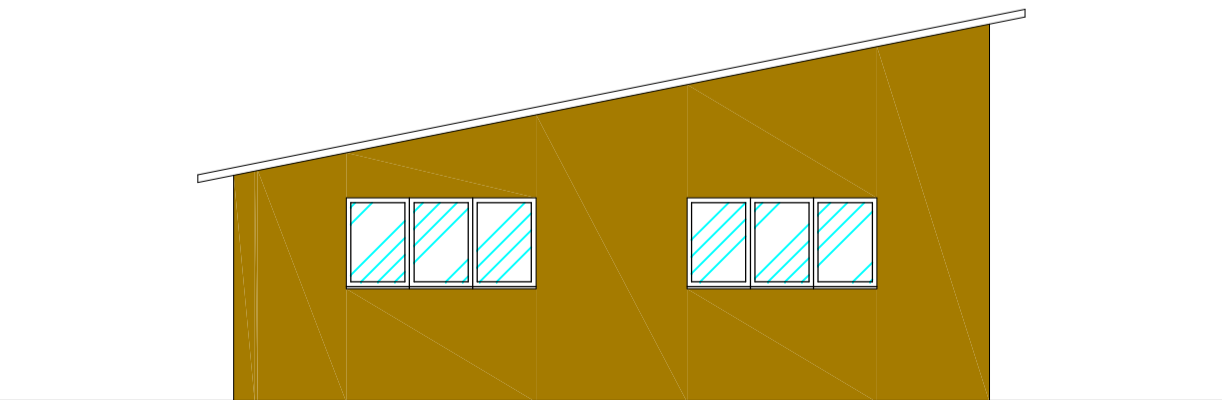
RETRO



SEZIONE A-A



FIANCO DESTRO



FIANCO SINISTRO