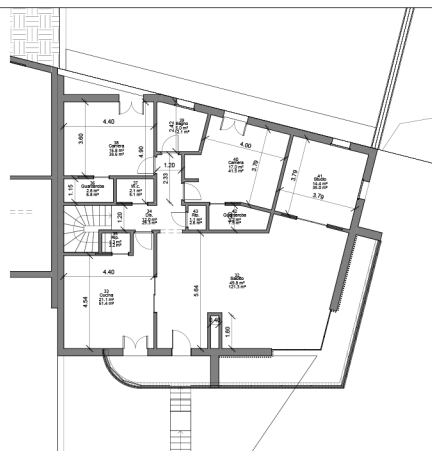
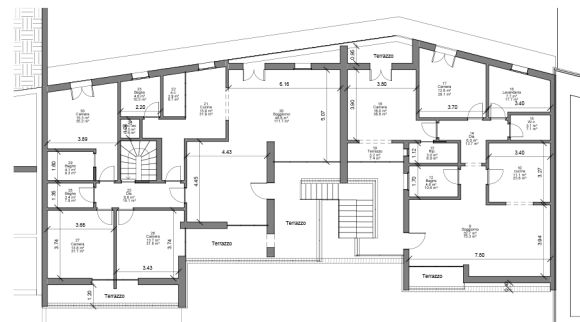


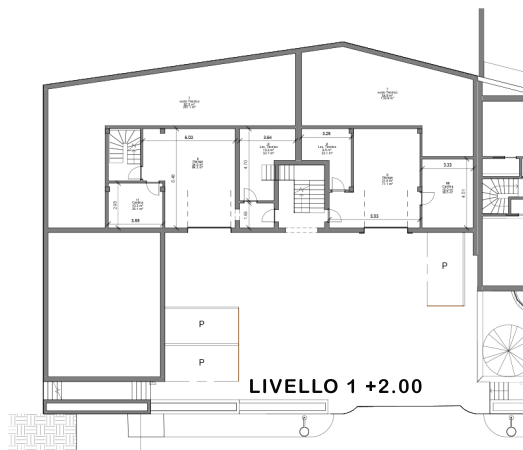
LIVELLO 0+ 0.0



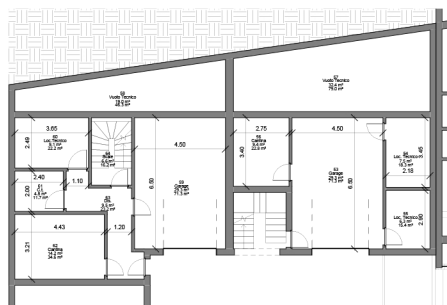
LIVELLO 0.1 +2.80



LIVELLO 1.1 +4.80



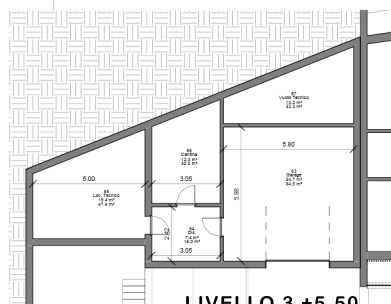
LIVELLO 1 +2.00



LIVELLO 2 +3.75



LIVELLO 2.2 +6.55



LIVELLO 3 +5.50



LIVELLO 3.1 +8.30

 <b>COMUNE DI MONTERIGGIONI</b> PROVINCIA DI SIENA				
<b>PUA_Comparto_TU25</b>		Oggetto: <b>Tipologie</b>	Scala:	
Committente: <b>TERRA TOSCANA</b>		TAV. n. <b>P.5</b>		
Progettista: Arch. Matteo Barducci - Ing. Toscano Giovanni		Numero del progetto <b>0001</b>		
Data: 21/02/2023				